

SendCom.exe – Description

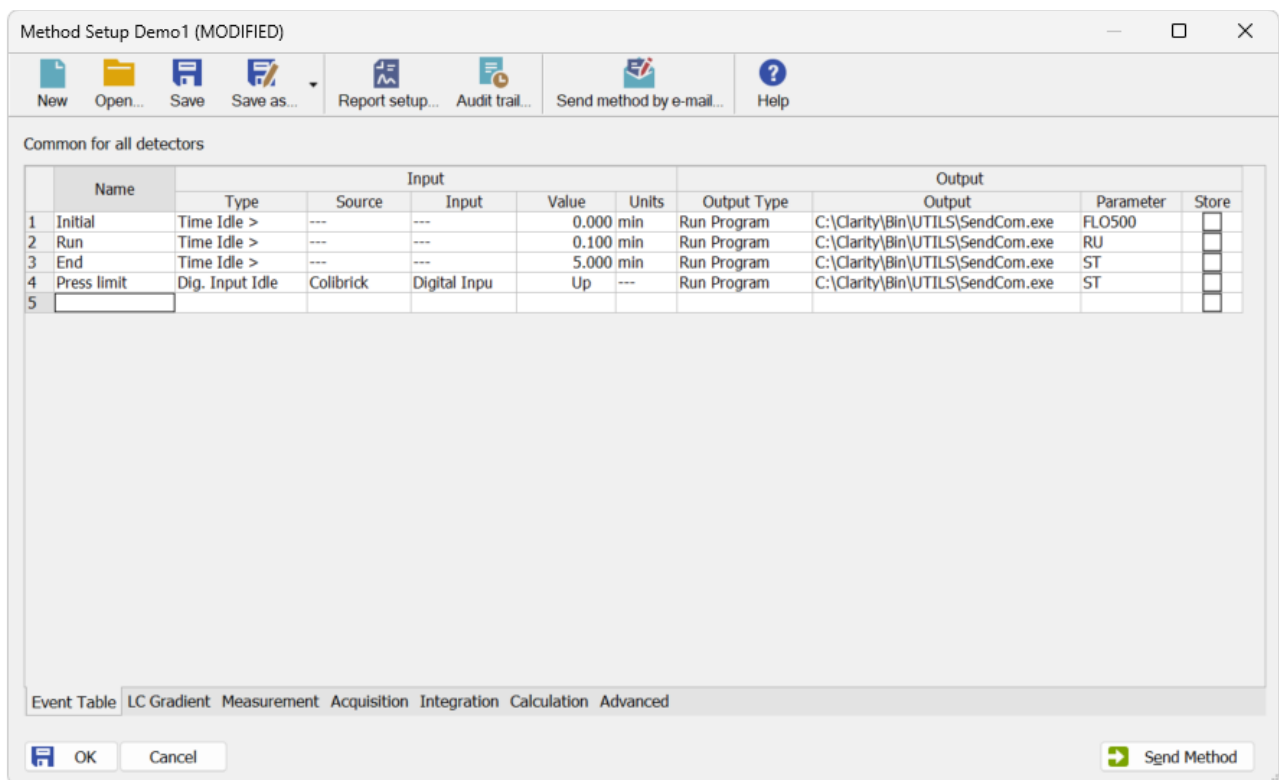
SendCom.exe is a software utility that enables basic control of certain devices, such as HPLC pumps, detectors, and switching valves, using RS232 serial line communication from Clarity. It enables the sending of simple text commands to the selected device using the communications settings specified in the *SendCom.ini* file (located in C:\Clarity\Cfg).

SendCom.exe can be found in the *UTILS* subfolder either on the Clarity installation USB or in the C:\Clarity\Bin\UTILS folder after installation. *SendCom.exe* first searches for the *SendCom.ini* file in C:\Clarity\Cfg (default location), and when it does not find it there, it searches next to the *SendCom.exe* location.

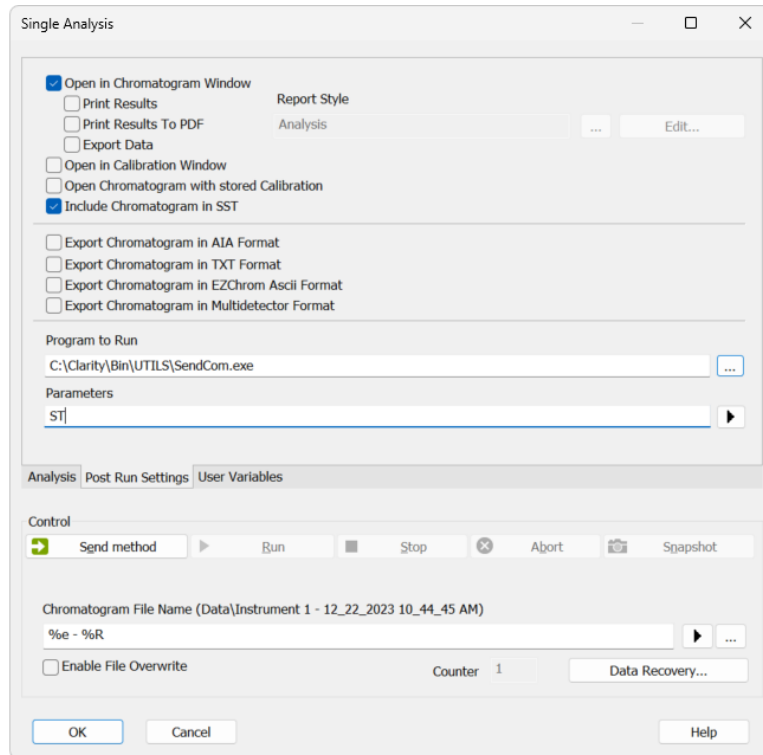
Using SendCom in Clarity

SendCom.exe can be called within Clarity from the following three locations:

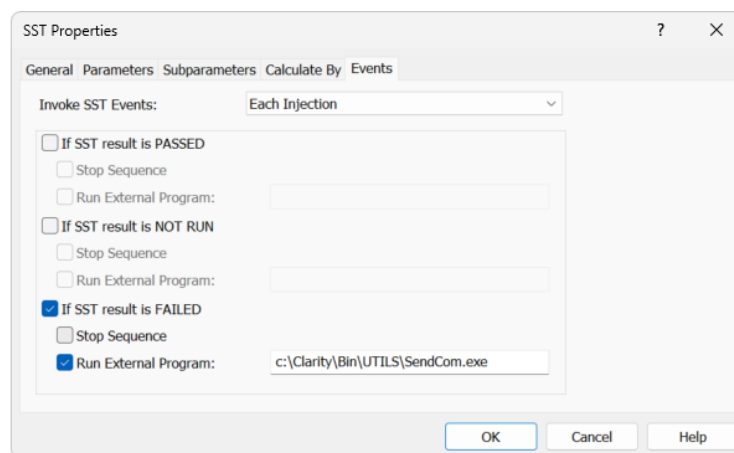
- **Method Setup – Event Table** dialog: during an acquisition run, from a line in the Event Table



- **Single Analysis** dialog, **Post Run Settings** tab: at the end of a run



- **SST Properties – Events** dialog: based on the SST result at the end of an acquisition run during sequence (accessible from Chromatogram – SST – Events...)



To start SendCom based on the SST Result, the optional SST Extension (p/n A22) for System Suitability Check must be purchased.

Further information about SST Extension can be found at: <https://www.dataapex.com/product/extensions-sst>

The SendCom program opens a communication port, sends the parameters, and then closes the port again. It does not check whether the communication was successful or whether the command was accepted and performed by the device.

The SendCom parameters

The string entered into the *Ext. Parameters* field is limited to 255 characters and it will be sent to the device as entered. See the device documentation for required syntax and command timings. Some devices can accept several commands from a single line, others will ignore commands until the preceding ones are completed.

SendCom.ini initialization file

SendCom.ini is located by default in *C:\Clarity\Cfg*. It is a simple editable text file, containing the following parameters:

```
[SendCom]

PORT=1                specifies the port
SPEED=9600            used baud rate
BYTESIZE=8            bytesize

PARITY=0              parity (according to the options in the list)
;NOPARITY=0
;ODPARITY=1
;EVENPARITY=2
;MARKPARITY=3
;SPACEPARITY=4

STOPBITS=0            stop bits (according to the options in the list)
;ONESTOPBIT=0
;ONE5STOPBITS=1
;TWO5STOPBITS=2

ADD_CR=0              end command by carriage return (0=no, 1=yes)
ADD_LF=0              end command by line feed (0=no, 1=yes)
```

Controlling multiple devices

When it is necessary to control multiple devices, create a copy of *SendCom.exe* and *SendCom.ini* in a separate subfolder for each device. For example like this:

- *C:\Clarity\Cfg\SendCom1*
 - *C:\Clarity\Cfg\SendCom1\SendCom.exe*
 - *C:\Clarity\Cfg\SendCom1\SendCom.ini*
- *C:\Clarity\Cfg\SendCom2*
 - *C:\Clarity\Cfg\SendCom2\SendCom.exe*
 - *C:\Clarity\Cfg\SendCom2\SendCom.ini*

In Clarity, make sure to use the correct *SendCom.exe*. In the aforementioned example, each *SendCom.exe* will use *SendCom.ini* from the corresponding subfolder.