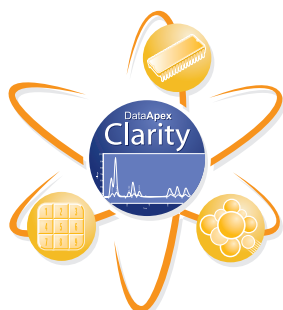


Clarity Control Agilent 6890



Direct control of Agilent GC using Clarity Chromatography Software

The Clarity Chromatography Station allows for direct control of the Agilent 6890, 6890N, 6850 and 6820 gas chromatographs using a GC Control module.

Direct control of the GC enables Clarity to provide integrated instrument control and to ensure complete automation for laboratories.

The control module includes parameters for the **GC** (temperature gradient, inlets, etc.), its **Detectors** (data acquisition, sensitivity setting, etc.) and **7683 Autosampler** including tray (an AS Control licence is required).



The user can easily and directly set all parameters of the chromatograph from his or her computer. All these parameters are collected in the GC method displayed in the **Method Setup - GC Control** dialog. The GC method gives complete control over the oven, inlets, detectors, valves, time events, as well as auxiliary and column pressure compensation. The applied GC method will be stored in the chromatogram file and can be displayed or printed any time.

The **GC Monitor** window allows for the online monitoring of the GC in both the current and required values so, for example, it is clear whether a temperature has already stabilized. The GC configuration (type, available accessories, etc.) is automatically detected. The detected configuration can be reviewed or edited in the **System Configuration** dialog.

The GC Control is an optional software module for Clarity Chromatography Software. An optional AS Control module is also available for 68xx compatible autosamplers, such as Agilent 7683 and 7673 (both including tray), HTA 200, etc..

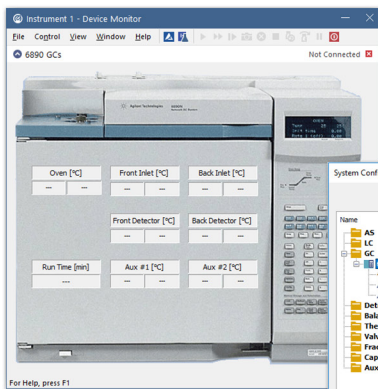
Clarity Chromatography Software is designed to acquire and evaluate data from up to four multidetector chromatographs at one time (four independent time bases).

The Agilent 6890 GC Control module was developed upon mutual agreement with the Agilent company and is based on detailed documentation, which they provided.

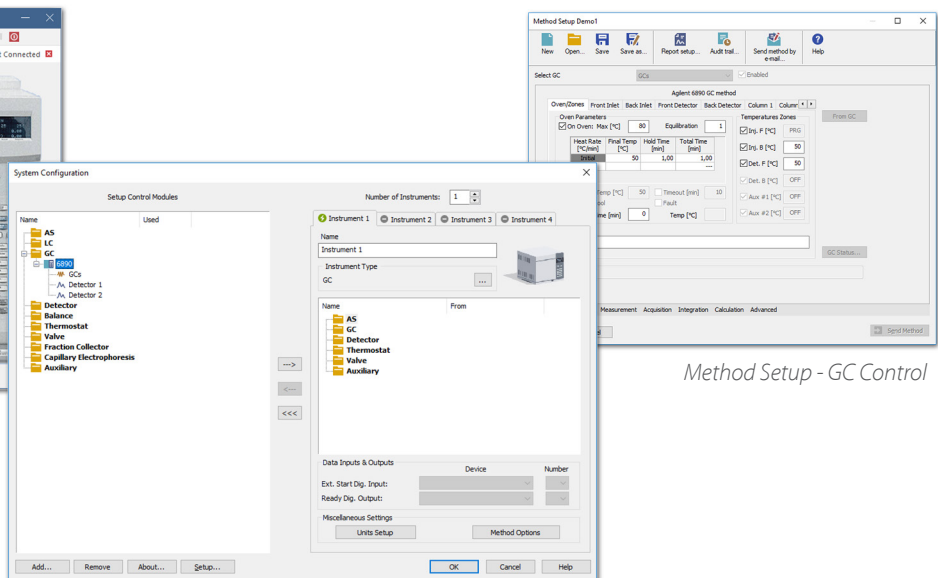
For more information, contact clarity@dataapex.com or download the Agilent 68xx manual from our website, www.dataapex.com.

Specification

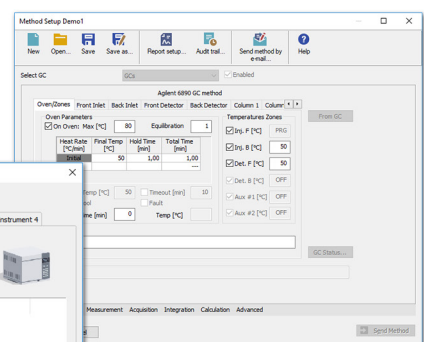
Controlled devices:	The GC control module is compatible with the Agilent 6890, 6890N, 6850 and 6820 GCs.
Communication interface:	COM (RS232) LAN – 6890N, 6820 and 6850 models only
Data acquisition interface:	COM (RS232)– Digital Data Acquisition LAN – Digital Data Acquisition (6890N, 6820 and 6850 models only) ANALOG – analog signal to A/D converter (eg. Colibrick , INT9 or U-PAD2) for detectors with analog output only and for not supported detectors.
Supported detectors (parts):	FID, ECD, TCD, NPD, etc.
Compatible products:	Clarity
Purchasing:	GC Control - (p/n A23)
Accessories:	RS232 or LAN Cable



GC Monitor



System Configuration



Method Setup - GC Control

