

## Clarity LC Controls – Hitachi L6200/L6210 pumps

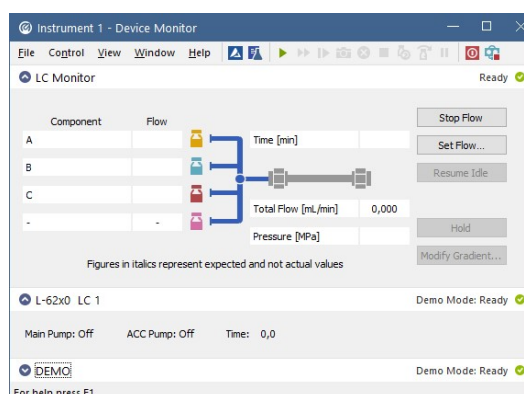
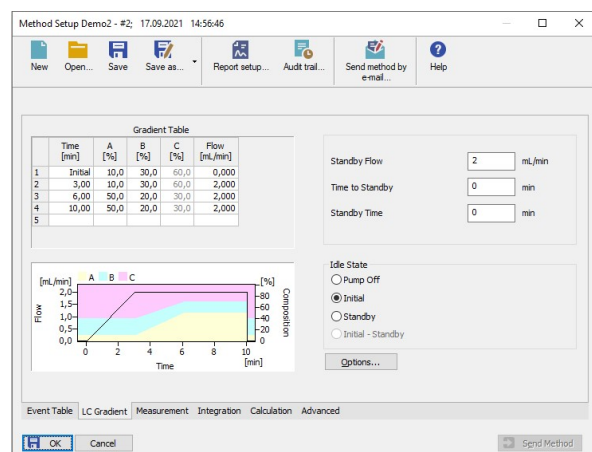
### Direct control of Hitachi pumps using the Clarity Chromatography Software

Clarity Chromatography Station allows for direct control of the Hitachi gradient pumps L-6200 and L-6210. The Clarity Chromatography Station is designed to acquire and evaluate data from up to four chromatographs at a time (multi detectors measurement supported). The LC pump control module is optional add-on software for the Clarity Chromatography Station. The chromatography station with the LC control module provides the user with access to all parameters of a pump directly from a computer.



Detailed description can be found at: <http://www.dataapex.com/product.php?id=controls-lc-hitachi-l62x0.php>

The user can easily create a gradient method from the Method Setup - LC Control window, set a percentage of each gradient component and an overall flow rate in the gradient table. All parameters including parameters controlling pump behavior in the idle state are a part of the method. Therefore it is possible to create various gradient profiles and choose - only by loading - the corresponding method.



Actual flow rates of each gradient component and their overall sum and pressure can be monitored in the independent Device Monitor. Control is realized via a standard PC serial port using a specified serial cable. An optional USB - RS232 converter [MultiCOM](#) (p/n MC01) is available for computers with insufficient number of COM ports.

### Specification:

<b>Controlled devices:</b>	Hitachi L6200 / L6210
<b>Communication interface:</b>	COM (RS232)
<b>Purchasing:</b>	LC Control (p/n A24)
<b>Related Products</b>	Clarity (p/n C50)
<b>Compatible Products:</b>	Clarity Software - Part No. C55 (required)
<b>Cable:</b>	Serial straight DB9F-DB25M cable (p/n SK03)