

SHODEX RI-101

Clarity Control Module

ENG

Code/Rev.: M159/90C

Date: 2024-02-14

Phone: +420 251 013 400

clarity@dataapex.com

www.dataapex.com

DataApex Ltd.
Petřilkova 2583/13
158 00 Prague 5
Czech Republic

Clarity[®], DataApex[®] and ▲[®] are trademarks of DataApex Ltd. Microsoft[®] and Windows[™] are trademarks of Microsoft Corporation.
DataApex reserves the right to make changes to manuals without prior notice. Updated manuals can be downloaded from www.dataapex.com.

Author: DM

Contents

1 Shodex RI-101 Control Module	1
2 Requirements	2
3 Installation Procedure	3
3.1 Shodex RI-101 detector communication	3
3.2 Clarity Configuration	4
4 Using the control module	6
4.1 Method Setup - Acquisition	7
4.2 Method Setup - Advanced	9
4.3 Hardware Configuration	10
4.4 Device Monitor	11
4.5 DataApex UNI Setup	12
5 Report Setup	13
6 Troubleshooting	14

To facilitate the orientation in the **Shodex RI-101** manual and **Clarity** chromatography station, different fonts are used throughout the manual. Meanings of these fonts are:

Open File (italics) describes the commands and names of fields in **Clarity**, parameters that can be entered into them or a window or dialog name.

WORK1 (capitals) indicates the name of the file and/or directory.

ACTIVE (capital italics) marks the state of the station or its part.

Chromatogram (blue underlined) marks clickable links referring to related chapters.

The bold text is sometimes also used for important parts of the text and the name of the **Clarity** station. Moreover, some sections are written in format other than normal text. These sections are formatted as follows:

Note: Notifies the reader of relevant information.

Caution: Warns the user of possibly dangerous or very important information.

█ Marks the problem statement or trouble question.

Description: Presents more detailed information on the problem, describes its causes, etc.

Solution: Marks the response to the question, presents a procedure how to remove it.

1 Shodex RI-101 Control Module

This manual describes the setting of the **Shodex RI-101**, **RI-102** and **RI-104** detector. The control module enables direct control of the instrument over serial line.

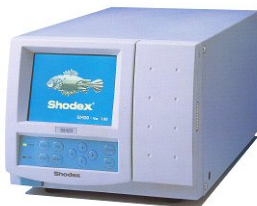


Fig. 1: Shodex RI-101 detector

Direct control means that the detector can be completely controlled from the **Clarity** environment. The Instrument method controlling the analysis conditions will be saved in the measured chromatograms.

The control is performed via the **UNI Ruby** control module and the **Shodex RI-101** script.

2 Requirements

- **Clarity** Installation with LC Control (p/n A24) or GC Control module (p/n A23).

Caution: Minimal firmware version required of the **Shodex RI-101** detector is **1.06**.

- Free serial COM port in the PC.

Note: Modern computers usually have only one (if any) serial (COM) port installed. To use more devices requiring the RS232 port, the **MultiCOM** adapter (p/n MC01) is available.

- Serial DB9F-DB9M straight cable (p/n SK02).

Note: Cables are not part of **Clarity** Control Module. It is strongly recommended that you order the required cables together with the Control Module.

3 Installation Procedure

3.1 Shodex RI-101 detector communication

The **Shodex RI-101** is controlled by serial (RS232) communication. It uses a standard serial DB9F-DB9M straight cable (p/n SK02) described in the picture below.

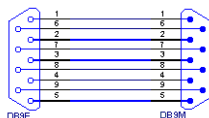


Fig. 2: Serial DB9F-DB9M straight cable

Caution: The Shodex RI-101 detector cannot be used to start the analysis in Clarity, so in case there is another device not directly controlled that should decide on the analysis start (e.g. an autosampler), another way of getting the start signal into Clarity will be needed (such as Colibrick A/D converter (p/n U3x) or an optional Digital Input Device (p/n DID01) adapter).

3.2 Clarity Configuration

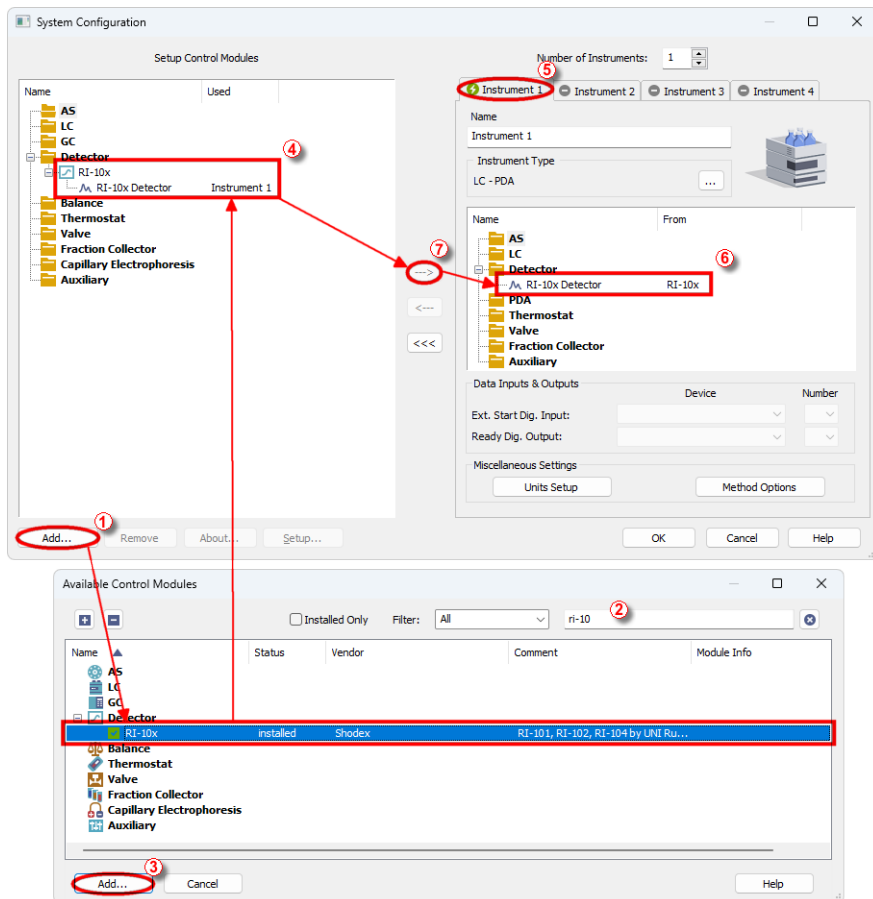



Fig. 3: How to Add Shodex RI-101 module

- Start the **Clarity** station by clicking on the  icon on the desktop.
- Invoke the *System Configuration* dialog accessible from the *Clarity* window using the *System - Configuration...* command.
- Press the *Add* button (1 on Fig. 3 on pg. 4.) to invoke the *Available Control Modules* dialog.
- You can specify the search filter (2) to simplify the finding of the driver.

- Select the correct item and press the *Add* (③ on Fig. 3 on pg. 4.) button. Each device with already created UNI profile should have its own item named accordingly in the *Available Control Modules* dialog.
- The *DataApex UNI Setup* dialog will appear.

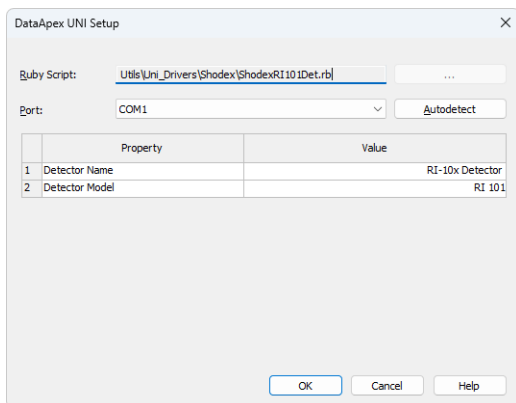


Fig. 4: *DataApex UNI Setup*

- Set the correct communication *Port* and click on the *AutoDetect* button to establish communication with the device.
- You may fill in the custom *Device Name*.

Note: The *DataApex UNI Setup* dialog is described in detail in the chapter "**DataApex UNI Setup**" on pg. 12.

- The **Shodex RI-101** item (④) will appear in the *Setup Control Modules* list of the *System Configuration* dialog.
- Drag the appropriate item from the *Setup Control Modules* list on the left side to the desired *Instrument* tab (⑤) on the right side (⑥), or click on the (--->) button (⑦).

4 Using the control module

After adding and setting up the detector a new [Acquisition](#) tab will appear in the *Method Setup* dialog. A new **Shodex RI-101** detector section enabling the monitoring of the current detector state will be also created in the *Device Monitor* window.

4.1 Method Setup - Acquisition

The *Method Setup - Acquisition* tab serves for setting the common parameters of the **Shodex RI-101** detector. If more than one detector is available, it is possible to select between them by using the *Select Detector* combobox on the top of the dialog.

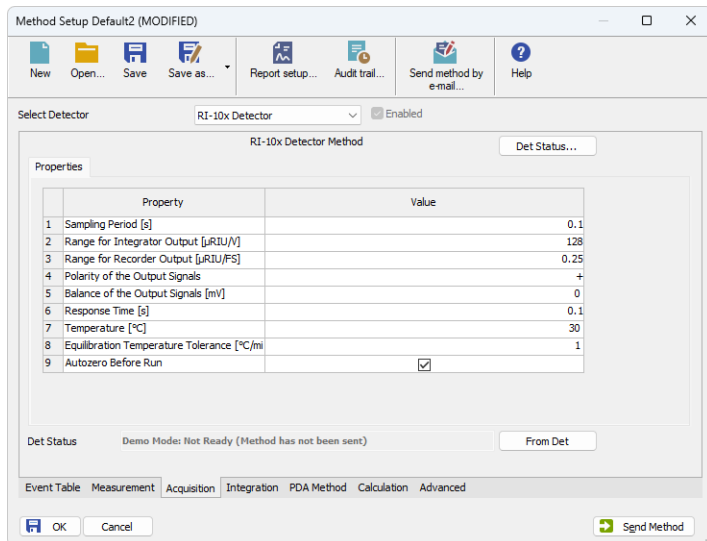


Fig. 5: Method Setup - Acquisition

Sampling Period [s]

Defines the frequency of data being gathered in the detector. The frequency of the data being sent to **Clarity** from the detector is defined by *Response Time* parameter. Valid values for the **Shodex RI-101** detector range from 0.1 to 2.0 s.

Range for Integrator Output [μ RIU/V]

Sets the output range for the Integrator Output analog output, as well as digital signal sent to **Clarity**. The available range is dependent on the *Detector Model* as set in the *DataApex UNI Setup* dialog.

Range for Recorder Output [μ RIU/FS]

Sets the output range for the Recorder Output analog output, as well as digital signal sent to **Clarity**.

Polarity of the Output Signals

Determines the polarity of the output signal.

Balance of the Output Signals [mV]

Defines the value to which the signal level will be reset when *Autozero* function is used.

Response Time [s]

Sets the frequency of the data being sent to **Clarity** from the detector. Setting this parameter to other value than *Sampling Period* means that the detector will filter the data and only send averaged values to **Clarity**.

Temperature [°C]

Defines the working temperature of the **Shodex RI-101** detector.

Equilibration Temperature Tolerance [°C]

Serves for the setting of the target temperature tolerance. When the temperature reaches the desired value with the tolerance set here, the detector gets to the *READY* state.

Autozero before Run

Sets whether the detector should be autozeroed at the beginning of the analysis run.

From Det

Loads the detector control parameters from the detector to **Clarity**.

Det Status

When invoked, opens the [Hardware Configuration](#) dialog showing the information regarding the connected detector.

4.2 Method Setup - Advanced

The *Method Setup - Advanced* tab serves for setting the usage of auxiliary signals of the **Shodex RI-101** detector.

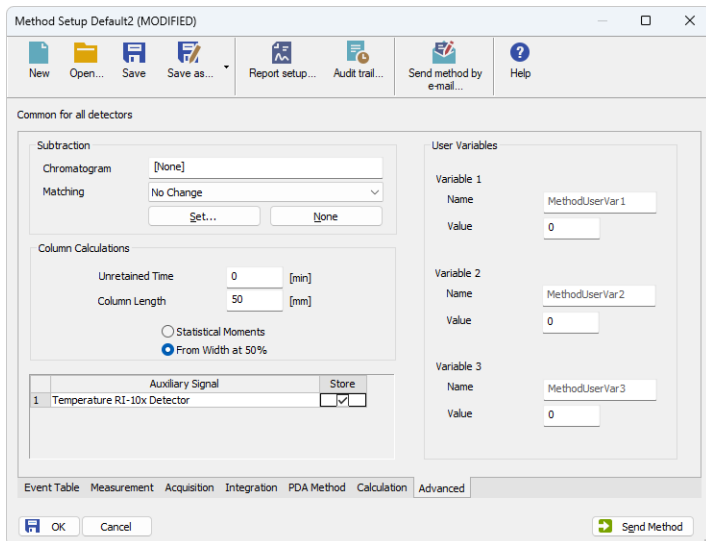


Fig. 6: Method Setup - Advanced

The list of available auxiliary signals is shown in the table in the lower part of the dialog. By checking the checkbox in the *Store* column for the particular row, the given auxiliary signal will be stored into the measured chromatogram.

4.3 Hardware Configuration

The *Hardware Configuration* dialog (invoked by using the *Det Status* button from the [Method Setup - Acquisition](#) dialog) displays the configuration of the **Shodex RI-101**, namely the communication type and its parameters.

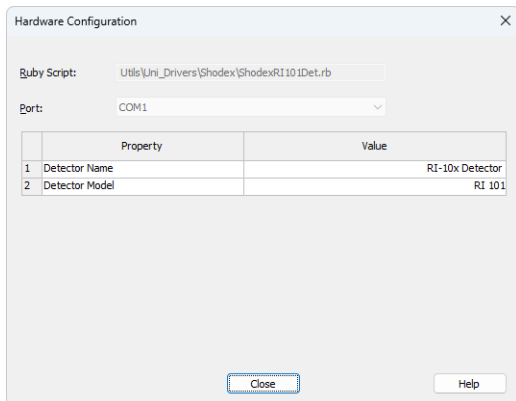



Fig. 7: Hardware Configuration

4.4 Device Monitor

The window with the detector status can be invoked by the *Monitor - Device Monitor* command from the *Instrument* window or using the  *Device Monitor* icon.

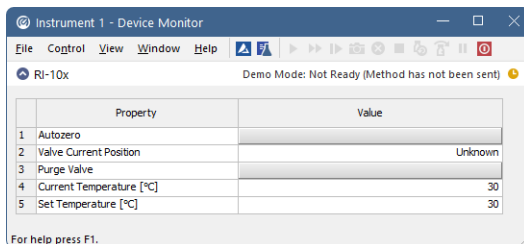


Fig. 8: Device Monitor - Detector

Autozero

Zeroes the connected detector.

Valve Current Position

Shows the state of the purge valve. The valve position can be changed using the *Purge Valve* row.

Purge Valve

Allows to set the purge valve on or off. The current state of the Purge valve is visible in the *Valve Current Position* row. Such action can only be performed outside of the analysis run.

Current Temperature [°C]

Shows the current temperature of the detector cell.

Set Temperature [°C]

Shows the set temperature of the detector cell.

4.5 DataApex UNI Setup

The appearance of the *DataApex UNI Setup* dialog depends on the presence of the selected Ruby Script - if the script is not present, only the *Ruby Script* field is visible.

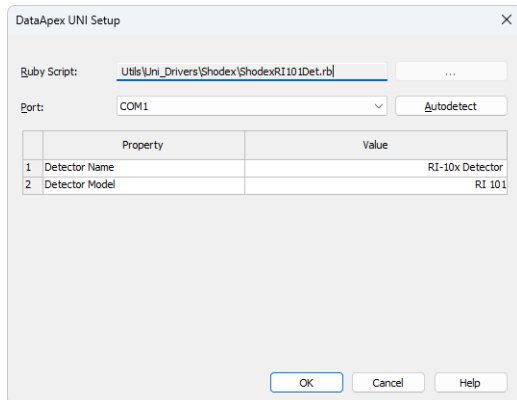


Fig. 9: DataApex UNI Setup

Ruby Script

Displays the selected Ruby Script. The correct SHODEXRI101DET.RB script for the **Shodex RI-101** detector can be found in the UTILS/UNI_DRIVERS/SHODEX subdirectory (accessible through the button) of the **Clarity** installation folder (C:\CLARITY\BIN by default).

Port

Defines the communication port used, possible values dependent on the type of communication of the device and/or available ports in the PC.

AutoDetect

It is used for verifying the device communication over the serial port selected above.

Detector Name

Allows you to set the custom name of the detector. This name (entered into the *Value* column) will be used throughout the **Clarity** station.

Detector Model

Allows you to set the type of the detector. The selection influences several settings further in *Method Setup - Acquisition* dialog.

5 Report Setup

The detector section on the method report can be enabled by checking the *Instrument Control* checkbox on the *Method* tab of the *Report Setup* dialog. Auxiliary signals setting made on *Method Setup - Advanced* tab will be also printed.

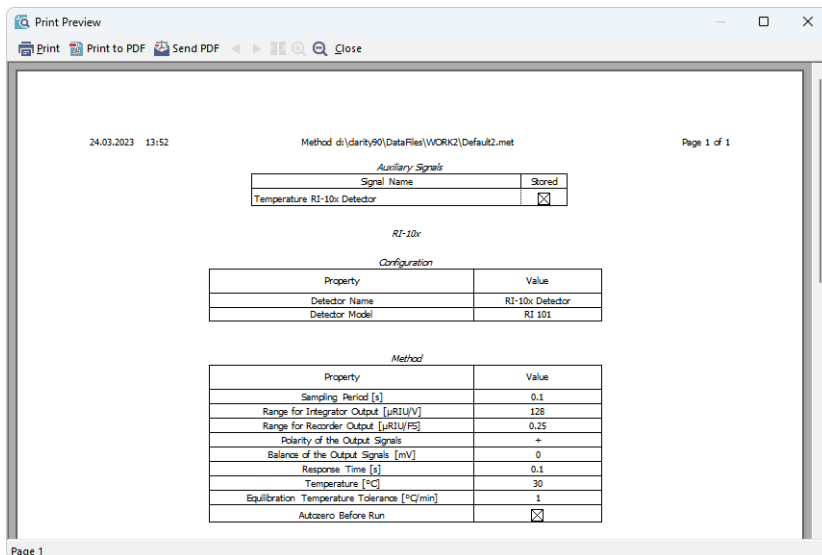


Fig. 10: Report Setup

All of the parameters set in the *Method Setup - Acquisition* dialog are reported, as well as the custom *Detector Name* and other parameters set in the *DataApex UNI Setup* dialog.

6 Troubleshooting

When the solution to a problem cannot be found easily, a recording of the communication between **Clarity** and the detector will significantly help **DataApex** support.

The data recording can be enabled by adding or amending the COMMDRV.INI file in the **Clarity** installation directory (C:\CLARITY\CFG by default). The file can be edited in any text editor (e.g. Notepad). The following section should be edited or added:

```
[COM1]
echo=on
textmode=on
filename=CommDrvCOM1_%D.txt
reset=off
```

Note: Instead of COM1, type the communication port used to communicate with the **Shodex RI-101** detector. This port number is displayed when the *Det Status* button in the *Method Setup - Acquisition* dialog is invoked.

Note: %D (or %d) in the filename parameter means that the log will be created separately for each day. The *reset=off* parameter disables deleting the content of the log each time the station is started during the same day.

The created *.TXT files will be of great help in the diagnosis of not documented errors and communication issues.