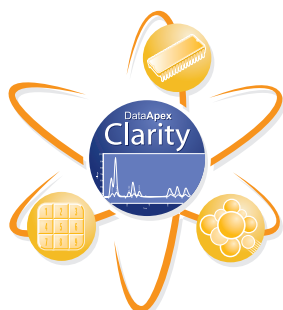


# Clarity Control Agilent 7890A



## Direct control of Agilent GC using Clarity Chromatography Software

The Clarity Chromatography Station allows for direct control of the Agilent 7890A gas chromatograph using a GC Control module. Direct control of the GC enables Clarity to provide integrated instrument control and to ensure complete automation for laboratories.

The control module includes parameters for the **GC** (temperature gradient, inlets, etc.), its **Detectors** (data acquisition, sensitivity setting, etc.) and **7683A, 7683B** and **7693 Autosampler** including tray (an AS Control licence is required).



CLARITY SOFTWARE



CONTROLS

EXTENSIONS

HARDWARE

The user can easily and directly set all parameters of the chromatograph from his or her computer. All these parameters are collected in the GC method displayed in the **Method Setup - GC Control** dialog. The GC method gives complete control over the oven, inlets, detectors, valves, time events, as well as auxiliary and column pressure compensation. The applied GC method will be stored in the chromatogram file and can be displayed or printed any time.

The **GC Monitor** window allows for the online monitoring of the GC in both the current and required values so, for example, it is clear whether a temperature has already stabilized. The GC configuration (type, available accessories, etc.) is automatically detected. The detected configuration can be reviewed or edited in the **System Configuration** dialog.

The GC Control is an optional software module for Clarity Chromatography Software. An optional AS Control module is also available for 7890A compatible autosamplers, such as Agilent 7683 and 7693 ALS (both including tray), HTA 200, etc.

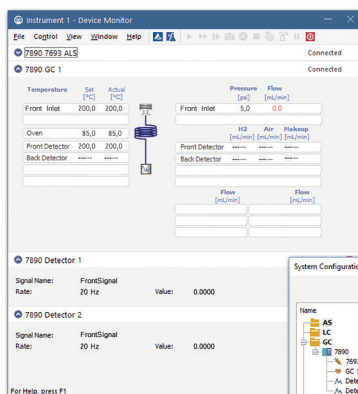
Clarity Chromatography Software is designed to acquire and evaluate data from up to four multidetector chromatographs at one time (four independent time bases).

The Agilent 7890A GC Control module was developed upon mutual agreement with the Agilent company and is based on detailed documentation, which they provided.

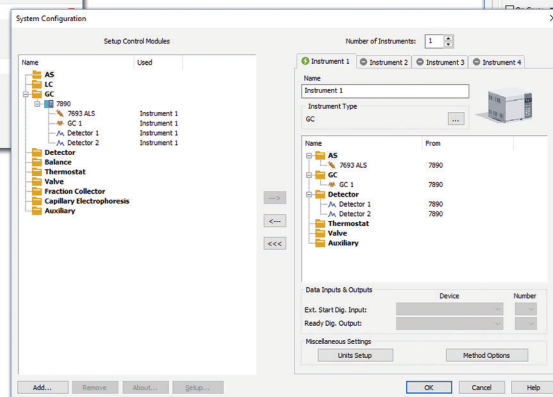
For more information, contact [clarity@dataapex.com](mailto:clarity@dataapex.com) or download the Agilent 7890A manual from our website, [www.dataapex.com](http://www.dataapex.com).

## Specification

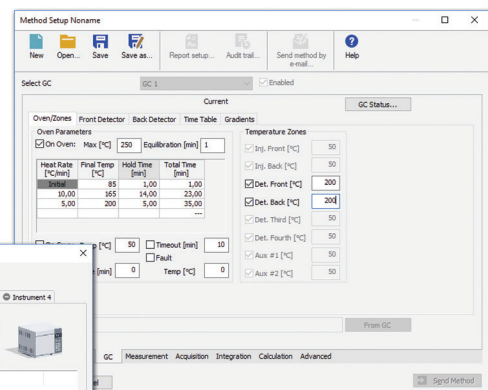
<b>Controlled devices:</b>	The GC control module is compatible with the Agilent 7890A GC
<b>Communication interface:</b>	LAN
<b>Data acquisition interface:</b>	LAN – Digital Data Acquisition
<b>Supported detectors (parts):</b>	FID, ECD, TCD, NPD, etc.
<b>Compatible products:</b>	Clarity
<b>Purchasing:</b>	GC Control - (p/n A23) AS Control - (p/n A26) - optional
<b>Accessories:</b>	LAN Cable



GC Monitor



System Configuration



Method Setup - GC