

Clarity Control - HT300L automatic sampler

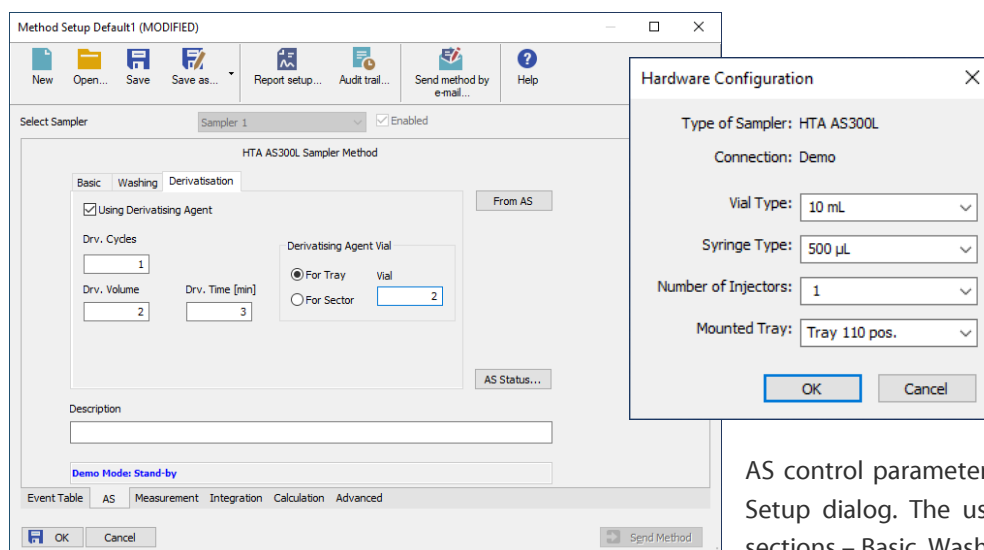
The Clarity Chromatography Station allows for direct control of the HT300L – automatic sampler for HPLC (HTA Italy). The autosampler (AS) control enables Clarity to ensure complete automation services for laboratories. The AS Control module is optional addition to Clarity software.

The Clarity Chromatography Station is designed to acquire and evaluate data from up to four chromatographs at a time (multi detectors measurement supported).

The chromatography station with the AS control module provides the user with direct computer access to all injection parameters and allows to determine the order of individual vials within sequences. A specific method can be selected for each sample in a given sequence. The method includes AS control parameters, parameters of data acquisition, integration and calculation. Straight from the software the user can plan and edit the sequence table.



Detailed description can be found at: <http://www.dataapex.com/products.php?dokument=31>



AS control parameters are accessible from the Method Setup dialog. The user set up all AS parameters in 3 sections – Basic, Washing, Derivatisation.

Control is realized via standard serial port of the computer (COM1 - COM4), using a standard RS 232 compliant 9F-9M cable. The control module is compatible with HT300L, HT300L/10, HT300L/LV versions.

For more information contact sales@dataapex.com

Requirements:

- **Clarity software** (p/n: C50)
Additional Information is available at: www.dataapex.com/product.php?id=clarity-std.php
- **AS control module** (p/n: A26)
Additional information is available at: www.dataapex.com/products.php?dokument=36
- **Straight serial DB9F-DB9M cable** (p/n: SK02)

Related products:

- **MultiCOM adapter** (p/n: MC01)